

Rodda
PAINT

COMMERCIAL • INDUSTRIAL • RESIDENTIAL

COVERCOAT^{XL}

Premium Acrylic Exterior

- Apply All Season / Hot or Cold
- Early Rain & Surfactant Resistance
- Moisture Tolerant
- Dry to Rain in 1 Hour
- Superior Fade Resistance
- High Build / High Hide Application



NEW X-LINK TECHNOLOGY!

The Rodda Paint Difference

DRY TO RAIN COMPARISON - BEST IN THE NORTHWEST

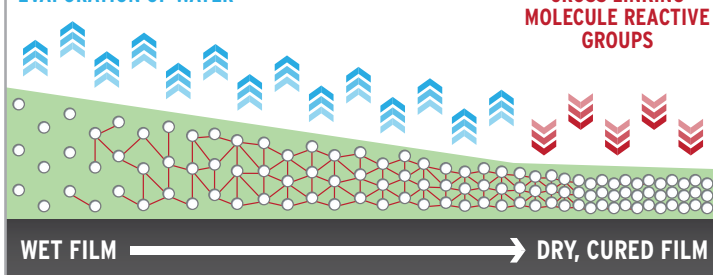
Time to Dry Chart

CoverCoat XL Products	Temp/Hum. 40 / 70	Temp/Hum. 60 / 45	Temp/Hum. 85 / 60
Flat	90 min.	60 min.	30 min.
Velvet	90 min.	60 min.	30 min.
Satin	90 min.	60 min.	30 min.
Low Sheen	90 min.	60 min.	30 min.



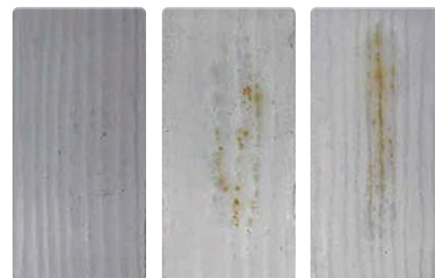
CoverCoat XL Leading Brand

EVAPORATION OF WATER



FADE COMPARISON - TOP PERFORMING RESULTS

CoverCoat XL's high-density film and resin efficiencies better deflect UV and water intrusion to show exceptional service life, extending the time between repaints. The regional and national supplier panels demonstrate obvious color fade beyond acceptable limits. Closer examination also reveals a loss of sheen and actual film breakdown as the sun's rays are trapped within the film.



CoverCoat XL Regional Paint Brand National Paint Brand

Cement board test panels are part of a EMMAQUA paint industry exposure study in Arizona under the most severe UV rays, temperature and imposed wet conditions. NASA global UV exposure schedules compares this harsh environment equivalent to 8 years in the Northwest climate.

SUPERIOR HIDE / COVERAGE / COATING THICKNESS

CoverCoat XL (X-Link Technology) was formulated to have higher coating thickness compared to the national standard. Professional painting contractors and building owners are requiring thicker coating performance with each coat for improved application and surface protection. Check out the laboratory comparison to the national brand.

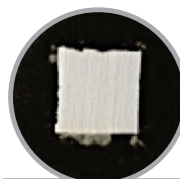


CoverCoat XL 421101

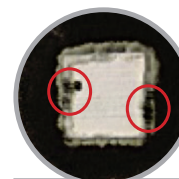
Leading Brand

ALGAE / MILDEW RESISTANCE - BEST IN CLASS

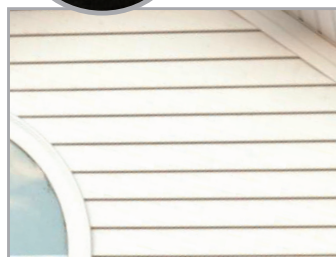
The National/Global competitor and leading brand grows mold and mildew in the Northwest. Rodda Paint's CoverCoat XL with X-Link Technology was developed to reduce or eliminate unsightly mold, mildew and algae.



CoverCoat XL
48 Hour Leach
(No Growth)



Leading Brand
48 Hour Leach
(Light Growth)



Made in the Northwest,
for the Northwest for 85 years.



Rodda Paint offers a Limited Lifetime Warranty for CoverCoat XL Exterior Paints against manufactured defects, chipping, peeling & blistering subject to application conditions and exclusions.

Go to our website www.rodmapaint.com or ask your Rodda Paint representative for details.

CoverCoat XL Technical Data

Sheen	Base	Gloss Level	Volume Solids (+/-2%)	Dry Film Thickness
Flat	White	1	39%	1.5 mils
Velvet	White	1	39%	1.5 mils
Satin	White	2	39%	1.5 mils
Low Sheen	White	3	39%	1.5 mils

No thinning recommended; Clean-up with warm soapy water; Available in ones, fives and some quarts. Airless spray: .015 to .021 tip; brush: Rodda Sash Pro Brush; roll: Rodda 3/4" FAB Polyester



FINISH RIGHT

6107 N. Marine Drive Portland, Oregon
503-521-4300 800-452-2315
www.rodmapaint.com

